

HK Yonwoo

MAKEUP COLLECTION



HK Yonwoo

MAKEUP COLLECTION

TABLE OF CONTENTS

YONWOO is ready to provide
the best color cosmetic packaging solutions for your makeup needs.

YONWOO

03 | Stick

07 | Compact

11 | Lipstick

15 | Rod with Applicator

18 | Tube

22 | Container & Pencil

STICK



Stick | Face



no.	Name	Item Code	Capacity	Size (mm)	Remarks	Filling Mode	Material
01	Stick RD A	MU0011-STK-UDD-CC-F0001	11g	Ø25,6 X 98,4		Top, Bottom	Outer Cap: ABS Inner Cap: SAN Guide: ABS Bottom Cover: ABS
06	Stick RT Long Cap	MU0020-RTL	20g	W40 X D23,9 X H88,4		Bottom	Outer Cap: PP
07	Stick RT Short Cap	MU0015-RTS MU0020-RTS	15g, 20g	15ml: W40 X D23,3 X H78,7 20ml: W40 X D23,3 X H88,4		Bottom	Dial: POK Bottle: PP

Stick | Face



no.	Name	Item Code	Capacity	Size (mm)	Remarks	Filling Mode	Material
01	Tri Stick	MU0011-STK-TRI-ST	11g	Ø28,1 X 95,4		Top, Bottom	Outer Cap: ABS Inner Cap: PETG Guide: ABS Bottom Cover: ABS
02	Duo Foundation	MU0011-STK-DUO-ST	11g	Ø25,7 X 120,9		Top, Bottom	Cap: ABS Guide: ABS Cover: ABS
05	2H Stick	MU0007-STK-HLF-CC	7g	Ø25,2 X 73,8		Top	Cap: ABS Guide: ABS Bottom Cover: ABS

Stick | Point



no.	Name	Item Code	Capacity	Size (mm)	Filling Mode	Material
02	Jumbo Duo Concealer	MU0003-CCL-DUO-ST	3ml(Bottle)+ 3g(Stick)	Ø20.4 X 112	Top	Cap: ABS Shell: AL Cover: ABS Rod: PETG Applicator: TPE (Flocked Tip) Bottle: PETG



Compact



no.	Name	Item Code	Capacity	Dosage (cc)	Size (mm)	Material
01	Micro Cushion Compact	MU0015-MC-F0001	15ml	0.20	Φ78.0 X 29	Upper Case: ABS Lower Case: ABS Plate: POK Button: PCTA
02	Micro Cushion Compact Ver.R360	MU0015-MC-F0002	15ml	0.20	Φ78.0 X 32.3	Upper Case: ABS Lower Case: ABS Plate: POK Button: PCTA
03	Side Button Compact	MU0015-SBC-CO-F0001	15ml	0.15	Φ75.3 X 30.9	Upper Case: ABS Lower Case: ABS Plate: PETG Button: PCTA
04	Side Button Compact Ver.R260	MU0015-SBC-CO-F0002	15ml	0.15	Φ75.3 X 34.7	Upper Case: ABS Lower Case: ABS Plate: PETG Button: PCTA
05	Side Button Compact Ver.Plate	MU0015-SBC-CO-F0003	15ml	0.15	Φ75.3 X 32.6	Upper Case: ABS Lower Case: ABS Plate: PETG Button: PCTA
06	Side Button Compact Square	MU0015-SBC-CO-F0004	15ml	0.15	W75.3 X D75.3 X H30.9	Upper Case: ABS Lower Case: ABS Plate: PETG Button: PCTA
07	Side Button Compact Square Ver.R260	MU0015-SBC-CO-F0005	15ml	0.15	W75.3 X D75.3 X H35.1	Upper Case: ABS Lower Case: ABS Plate: PETG Button: POK
08	Side Button Compact Square Ver.Plate	MU0015-SBC-CO-F0006	15ml	0.15	W75.3 X D75.3 X H32.5	Upper Case: ABS Lower Case: ABS Plate: PETG Button: POK

Compact



no.	Name	Item Code	Capacity	Size (mm)	Material
01	Skinny Compact Ver.1	MU0015-SK-1	15ml	Φ78.4 X 20.3	Upper Case: ABS Lower Case: ABS Inner Case: PP Button: PETG
02	Skinny Compact Ver.2	MU0015-SK-2	15ml	Φ78.4 X 22.3	Upper Case: ABS Lower Case: ABS Inner Case: PP Button: PETG
03	Skinny Compact Ver.Plate	MU0015-SK-2P	15ml	Φ78.4 X 23.6	Upper Case: ABS Lower Case: ABS Inner Case: PP Button: PETG
04	Metal Skinny Compact	MU0015-SK-2/ME	15ml	Φ81.4 X 22	Upper Case: Metal Lower Case: ABS Inner Case: PP Button: PETG
05	One Compact	MU0015-COM-ONE-CC-F0001	15ml	Φ76 X 26.8	Upper Case: ABS Lower Case: ABS Inner Case: PE Button: PCTG
06	One Compact Ver.Plate	MU0015-COM-ONE-CC-F0002	15ml	Φ76 X 27.9	Upper Case: ABS Lower Case: ABS Inner Case: PE Button: PCTG
07	Tetra Compact	MU0015-COM-TET-SQ-F0001	15ml	W75.6 X D75.6 X H27.4	Upper Case: ABS Lower Case: ABS Inner Case: PE Button: PCTG
08	Tetra Compact Ver.Plate	MU0015-COM-TET-SQ-F0002	15ml	W75.6 X D75.6 X H28	Upper Case: ABS Lower Case: ABS Inner Case: PE Button: PCTG

Compact



no.	Name	Item Code	Capacity	Size (mm)	Material
01	Airtight Compact	MU0012-CP/AT	12ml	Φ77 X 31.5	Upper Case: ABS Lower Case: ABS
02	Airtight Slim Compact	MU0012-CP/AT-SL	12ml	Φ70.6 X 23.7	Inner Case: PP Button: PETG
03	Airtight Slim Compact Ver. Plate	MU0012-CP/AT-SL-P	12ml	Φ70.6 X 23.7	Upper Case: ABS Lower Case: ABS Inner Case: PP Button: PETG
04	YW Compact Slim	MU0015-CP/YW-SL	15ml	Φ77 X 27.0	Upper Case: ABS Lower Case: ABS Inner Case: PP Button: PETG



no.	Name	Item Code	Capacity	Size (mm)	Material
01	Dew Single Compact	MU0005-COM-DSC-CC	5g	Φ62.1 X 13.3	Case: CLARO PET
02	Unit Pact	MU0002-CP/UN	2g	W34.1 X D34.1 X H11	Case: PP
03	Flip Pop	MU0002-COM-FLP-SQ	2g	W37 X D39.8 X H7.4	Upper Case: ABS Lower Case: PETG

LIPSTICK



Lipstick

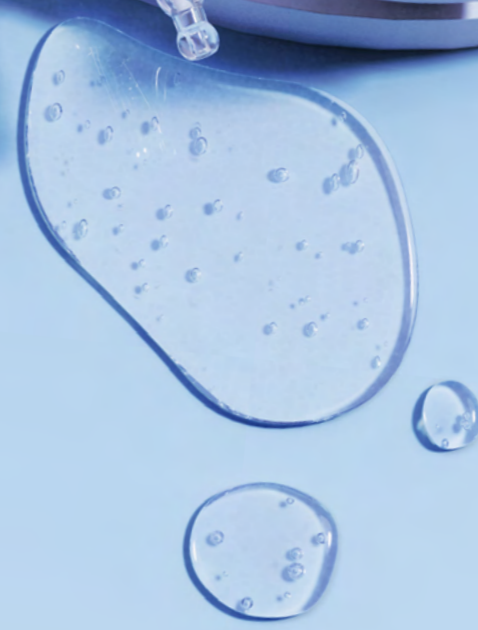


no.	Name	Item Code	Capacity	Size (mm)	Filling Mode	Material
01	Clear Cap Lipstick	MU00035-LIS-CCL-CC	3.5g	Ø22.9 X 76.6	Top	Cap: PETG Shell: AL Oring: Silicone Bottom Cover: ABS
02	Sleek Lipstick	MU00035-LIS-TWT-CC	3.5g	Ø21 X 75.8	Top	Cap: ABS Shell: AL Shoulder: ABS Cover: ABS Bottle: ABS
03	Click Lipstick	MU0004-CLK-LK	3g	Ø21.5 X 78.8	Top	Cap: ABS Button: ABS Shell: AL Bottom Cover: ABS
04	Cushion Lipstick	MU0003-LIP-CUS	2.5ml	Ø20.8 X 98.8	-	Cap: ABS Nozzle: PETG Applicator: NBR Puff Bottle: PETG Bottom Cover: ABS
05	Mag Lipstick RD	MU0005-LIP-MAG	4.5g	Ø22.4 X 74	Top	Cap: ABS Shell: AL Bottom Cover: ABS

ROD WITH APPLICATOR



TUBE



Tube



no.	Name	Item Code	Capacity	Size (mm)	Material
01	Ø16 Lip Gloss Round	NT16-LGR	3ml ~ 5ml	Cap Size: Ø15 X 17.5	Cap: PP Tube Head: PE
02	Ø16, Ø19 Lip Gloss Bevel Round Edge	NT16-LGB NT19-LBL	Ø16: 3ml ~ 5ml Ø19: 10ml ~ 20ml	Ø16 Cap Size: Ø14.8 X 18.5 Ø19 Cap Size: Ø18.1 X 20.6	Cap: PP Tube Head: PE
03	Ø19 Lip Gloss Bevel Standard	NT19-LBL	10ml ~ 20ml	Cap Size: Ø18 X 21.5	Cap: PP Tube Head: PE
04	Ø19 Triangle Tube	NT19-TTC	10ml ~ 20ml	Cap Size: Ø18.2 X 20.2	Cap: PP Tube Head: PE
05	Ø19 Clear Tip	NT19-CTC	10ml ~ 20ml	Cap Size: Ø10.5 X 19.8	Cap: PP Nozzle: PETG Tube Head: PE
06	Ø19 Clear Point	NT19-CPC	10ml ~ 20ml	Cap Size: Ø10.5 X 19.8	Cap: PP Nozzle: PETG Tube Head: PE

Tube



no.	Name	Item Code	Capacity	Dosage	Size (mm)	Material
01	Ø19 2 Way Applicator	NT19-2WA	10ml ~ 20ml	-	Cap Size: Ø17.6 X 19	Over Cap: PP Screw Cap: PP Rod: PP Applicator: NBR Puff, TPE (Flocked Tip) Tube Head: PE
02	Ø25 Dome Dome	NT25-DOM	10ml ~ 50ml	-	Cap Size: Ø25.1 X 26.2	Cap: PP Applicator: PP+TPE Shoulder: PE Tube Head: PE
03	Ø30 Clear Pump	AT30-CLP	30ml ~ 70ml	0.20cc	Cap Size: Ø23.7 X 37.5	Cap: PP Actuator: PP Pump Body: PP Shoulder: PETG Tube Head: PE
04	Ø30 Special Concealer	NT30-SPC	30ml ~ 70ml	-	Cap Size: Ø30 X 31.3	Cap: PP Dish: AL Tube Head: PE
05	Ø30 Dual Cap Dropper	NT30-DCD	30ml ~ 70ml	-	Cap Size: Ø29 X 46	Flip-top Cap: PP Dish: AL Screw Cap: PETG Nozzle: PCTA, PP Tube Head: PE

CONTAINER & PENCIL



Container



no.	Name	Item Code	Capacity	Dosage	Size (mm)	Material
01	Squeeze Chip	NS0010-SQZ-SQ	10ml	-	W29 X D18.8 X H56.3	Cap: PP Applicator: PP+TPE Bottle: PE
02	Multi Use	MU0030-MTU-CC	30ml	0.20cc	Ø34.6 X 108.4	Cap: PETG Actuator: PP Pump Body: ABS Bottle: PET Rod: PP Applicator: TPE (Flocked Tip)
03	Powder Spray	DP0030-PW	30ml	0.0001 ~ 0.1g	Ø35.7 X 96.0	Cap: PP Actuator: PP Shoulder: ABS Bottle: PET

Pencil



no.	Name	Item Code	Capacity	Dosage	Size (mm)	Remarks	Material
06	Spot	AS0005-SPOT AS0010-SPOT AS0015-SPOT	5ml, 10ml, 15ml	0.15cc	5ml: Ø22.5 X 103.2 10ml: Ø22.5 X 131.5 15ml: Ø22.5 X 160.4	Applicator Option: Brush / Metal Ball / 3Hole	Cap: PP Pump Body: PP Inner Bottle: PP Outer Bottle: PP Button: PP
07	Slim Spot	AS0007-SPOT	6.5ml	0.15cc	Ø20 X 139.9	Applicator Option: Brush / Silicone Tip	Cap: PP Pump Body: PP Inner Bottle: PP Outer Bottle: PP Button: PP